

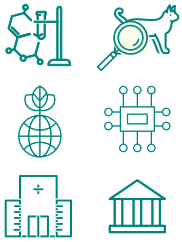
# One Health for **One World**

Taking a collaborative multi-disciplinary approach to achieving better health outcomes

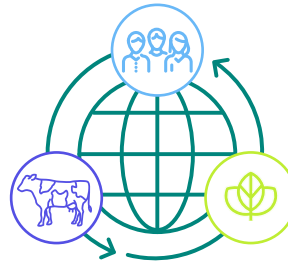


## What is **One Health**?

Over the past century, society has undergone many major changes, including those brought about by: **technological innovations, increased mobility, industrialization, urbanization, and globalization.** In many ways, these innovations have advanced human, animal and environmental health, but they have also increased our vulnerability to new health challenges.

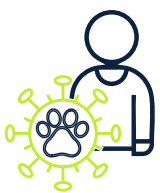


**The One Health approach is a collaborative multi-sectoral and multi-disciplinary approach** to achieve optimal health outcomes. It cannot be done by any singular entity or organization by itself, but instead requires a cooperative effort between multiple sectors of society.



**The One Health approach** recognizes the interconnection between the health of people, animals, plants and their shared environment.

## Why is One Health **Important Now**?



**60%** of existing **human infectious diseases** stem originally from animals.



**Increased environmental disruptions** have created new health issues and opportunities for diseases to pass between animals and humans.



**A globalized world broadens the spread of diseases.** Increase in international movement of humans, animals and animal products has increased the probability and speed of spreading diseases around the globe.

## What is **Merck Animal Health** Doing?



### **Prevention**

Producing over 102 billion doses of animal vaccines, making it one of the largest vaccine producers for animals in the world



### **Stewardship of Essential Medicines**

Supporting responsible use of antimicrobial medicines to ensure they remain effective treatments



### **Surveillance and Monitoring**

Committing to advocating for and participating in holistic surveillance monitoring systems to track and predict-health related issues



### **Ensuring a Safe and Sustainable Food Supply**

Implementing precision livestock management and traceability initiatives for early disease detection and individualized diagnosis and treatment decisions



### **Innovation**

Researching and developing novel vaccines and therapeutics for a broad array of infections



### **Respecting Our Shared Environment**

Supporting science-based, environmentally sound international and national programs to address the challenges to environmental health.